



LAMBROU REAL ESTATE

405 EDDY ST • ITHACA, NY 14850

607-256-3778 Office, 607-256-0767 Fax

801 E. SENECA ST. - 10 BR



(see reverse for floor plans)

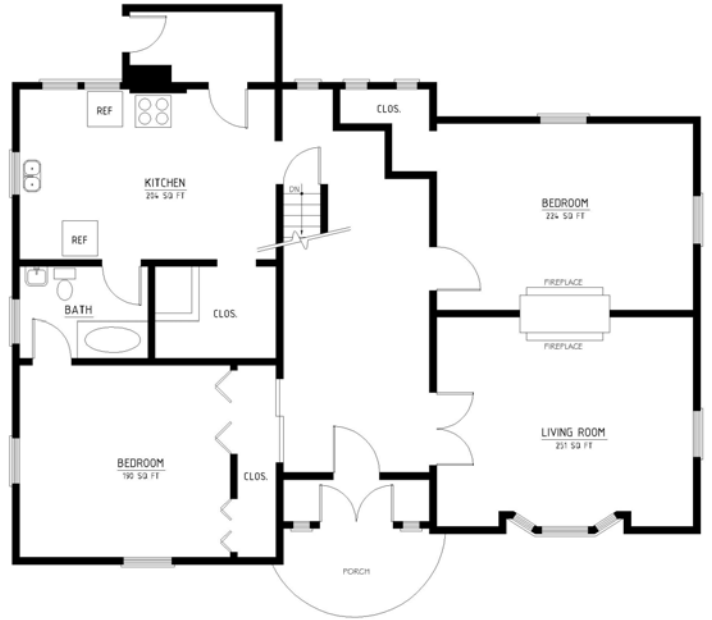
Rotunda porch entrance; 10 huge bedrooms spread over three stories plus basement; near intersection of Eddy St. and Seneca St.; additional side porch facing west with tremendous view; huge common areas; 4 baths and 4 kitchens with dishwashers, free in-house laundry; use of driveway for resident parking, free street parking, additional off-street parking available.

www.lambrourealestate.com

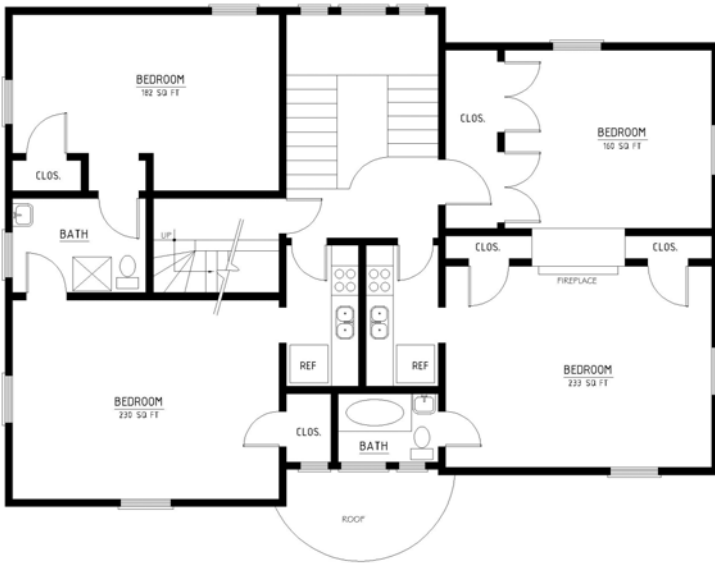
BASEMENT



FIRST FLOOR



SECOND FLOOR



THIRD FLOOR

